

\$795,000 - 406, 510 6 Avenue Se, Calgary

MLS® #A2211568

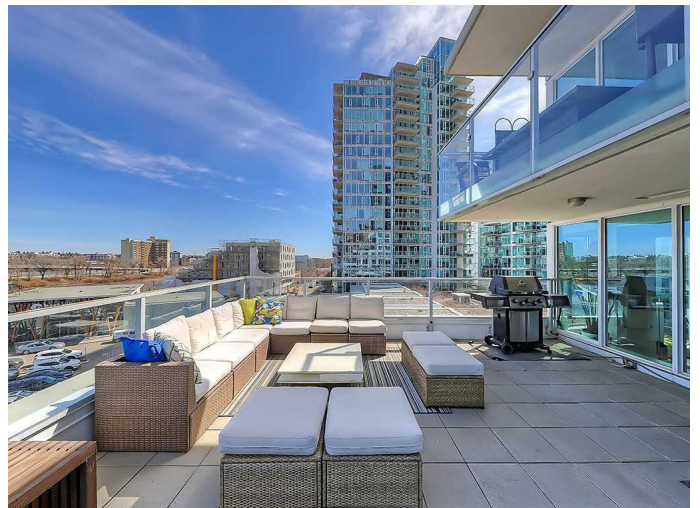
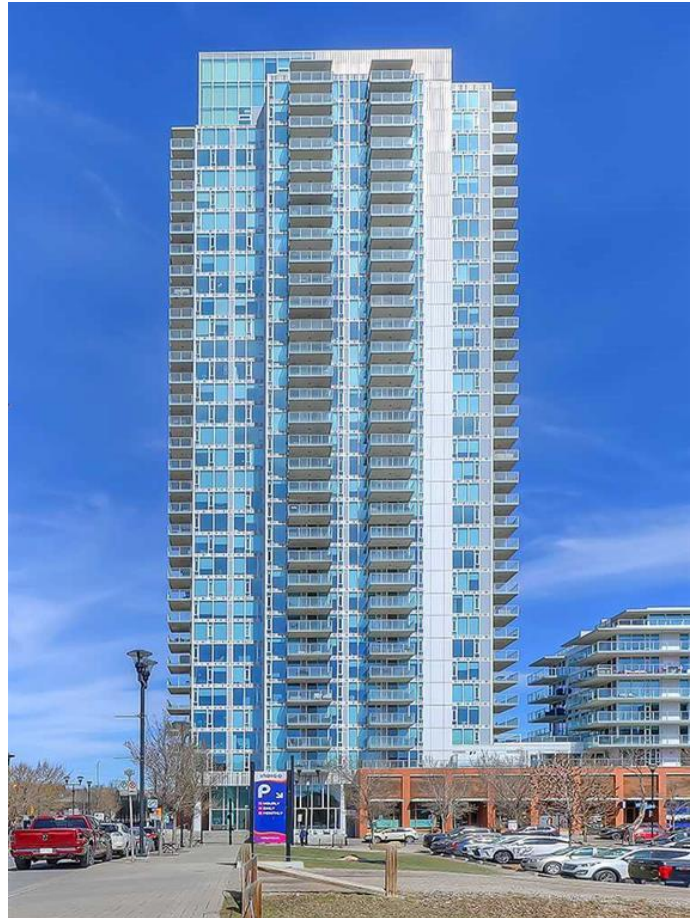
\$795,000

3 Bedroom, 2.00 Bathroom, 1,252 sqft

Residential on 0.00 Acres

Downtown East Village, Calgary, Alberta

Welcome to Suite 406 at the Pulse Tower in Evolution, where luxury meets lifestyle in the heart of Calgary's sought-after East Village. This stunning three-bedroom, two-bathroom residence features two-parking stalls, a large private terrace, and is highlighted by floor-to-ceiling windows that immerse the home in natural light. One of its most impressive features is the expansive 577 square-foot private outdoor space with sweeping views of the Bow River and the downtown skyline—ideal for entertaining or relaxing in complete privacy. The home is in meticulous condition and showcases contemporary design throughout, including a sleek, modern kitchen outfitted with stainless steel appliances, quartz countertops, and ample cabinetry. Spacious bedrooms, a spa-like ensuite, air conditioning, in-suite laundry, and generous storage all contribute to the comfort and functionality of the space. The unit features AC, heated bathroom floors, custom closet shelving, two side-by-side assigned parking stalls and a large private storage unit, offering added convenience in an urban setting. Residents of Evolution enjoy access to an array of premium amenities, including a garden terrace with BBQ area, a fully equipped fitness facility, steam room, sauna, and a stylish owners' lounge with pool table—perfect for socializing or unwinding. Situated in the vibrant East Village, this location is second to none. You're just steps from the Bow River pathways and St.



Patrick’s Island, and within easy reach of iconic Calgary landmarks like the Central Library, Studio Bell, and the Simmons Building. With grocery stores, restaurants, cafés, and the C-Train all just minutes away, this is downtown living redefined—blending walkability, culture, and community in one of the city’s most exciting neighbourhoods.

Built in 2016

Essential Information

| | |
|----------------|-------------------|
| MLS® # | A2211568 |
| Price | \$795,000 |
| Bedrooms | 3 |
| Bathrooms | 2.00 |
| Full Baths | 2 |
| Square Footage | 1,252 |
| Acres | 0.00 |
| Year Built | 2016 |
| Type | Residential |
| Sub-Type | Apartment |
| Style | Single Level Unit |
| Status | Active |

Community Information

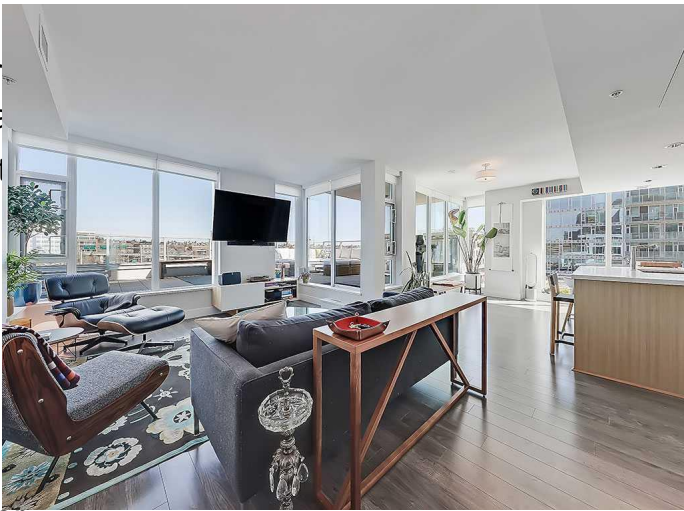
| | |
|-------------|-----------------------|
| Address | 406, 510 6 Avenue Se |
| Subdivision | Downtown East Village |
| City | Calgary |
| County | Calgary |
| Province | Alberta |
| Postal Code | T2G 1L7 |

Amenities

| | |
|----------------|--|
| Amenities | Elevator(s), Fitness Center, Recreation Room, Roof Deck, Secured Parking, Snow Removal, Trash, Visitor Parking, Recreation Facilities, Sauna |
| Parking Spaces | 2 |
| Parking | Parkade, Underground, Side By Side |

Interior

| | |
|-------------------|------------------------------|
| Interior Features | Built-in Features, Closet Or |
| | Stone Counters, Storage, Wa |
| Appliances | Dishwasher, Dryer, Gas St |
| | Washer, Window Coverings |
| Heating | Fan Coil |
| Cooling | Central Air |
| # of Stories | 32 |



Exterior

| | |
|-------------------|-------------------------------------|
| Exterior Features | Private Yard, Courtyard, Other |
| Construction | Brick, Concrete, Wood Siding, Glass |

Additional Information

| | |
|----------------|------------------|
| Date Listed | April 16th, 2025 |
| Days on Market | 61 |
| Zoning | CC-EMU |

Listing Details

| | |
|----------------|-----------------------------|
| Listing Office | RE/MAX House of Real Estate |
|----------------|-----------------------------|

Data is supplied by Pillar 9â„¢ MLSÂ® System. Pillar 9â„¢ is the owner of the copyright in its MLSÂ® System. Data is deemed reliable but is not guaranteed accurate by Pillar 9â„¢. The trademarks MLSÂ®, Multiple Listing ServiceÂ® and the associated logos are owned by The Canadian Real Estate Association (CREA) and identify the quality of services provided by real estate professionals who are members of CREA. Used under license.