

# \$1,550,000 - 6503 Lombardy Crescent Sw, Calgary

MLS® #A2223210

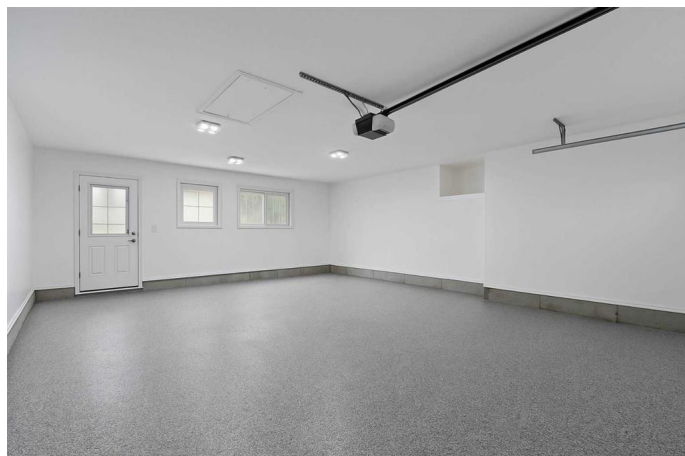
**\$1,550,000**

3 Bedroom, 3.00 Bathroom, 1,353 sqft

Residential on 0.15 Acres

North Glenmore Park, Calgary, Alberta

Looking for a fully renovated home steps to Earl Grey Golf Course and North Glenmore Park pathways ? This Extra wide lot has a front drive and Oversized and Heated double attached garage, with new garage door, extra windows and Epoxy floors. This bungalow is a Sprawling 1350 sq ft, plus fully developed basement. Classic brick faced exterior with new stucco; this home has been fully transformed and renovated, inside and out, including NEW HE Furnace, TWO Hot Water Tanks and a 200 AMP Electricity Panel. As you enter the home, you will find an upgraded Foyer with 24x24 inch tiled flooring, leading into the living room with vaulted ceilings, sky light, allowing for tons of natural light with large windows. The main floor offers Real site-finished Oak Hardwood flooring throughout. The New kitchen has white quartz counters, high end appliances including a 6-burner gas range, high CFM hood fan, 4-door fridge, Bosch stainless dishwasher and deep sink with pull out faucet. This home also has THREE New Custom Bathrooms including, a 4-piece Main bath, 3-piece Ensuite and Full bath in the basement with Tiled flooring & walls, granite counters and Custom toilets with self-closing, heated seats. The bedroom wing includes 3 bedrooms up, plus a 4th in the basement. This home is set up for the growing active family and is equipped for the in-laws or nanny, featuring laundry facilities on both floors, a Full Kitchen in the basement, with high end appliances, open concept living



room, new large egress windows in living and bedroom and a Cedar Lined Sauna to relax in. Situated on a quiet, tree lined street and conveniently located near Earl Grey Golf course, Calgary Girls school, Glenmore Park pathways, Shopping and is just a block away and easy access to Downtown and the Ring Road. Come check out this executive home today!

Built in 1960

### Essential Information

MLS® #	A2223210
Price	\$1,550,000
Bedrooms	3
Bathrooms	3.00
Full Baths	3
Square Footage	1,353
Acres	0.15
Year Built	1960
Type	Residential
Sub-Type	Detached
Style	Bungalow
Status	Active

### Community Information

Address	6503 Lombardy Crescent Sw
Subdivision	North Glenmore Park
City	Calgary
County	Calgary
Province	Alberta
Postal Code	T3E5R3

### Amenities

Utilities	Cable Available, Electricity Connected, Garbage Collection, Natural Gas Connected, Phone Available, Sewer Connected, Water Connected
Parking Spaces	2
Parking	Double Garage Attached, Front Drive, Garage Faces Front, Heated Garage, Aggregate, Garage Door Opener, Insulated, Oversized

# of Garages 2

### Interior

Interior Features Closet Organizers, Granite Counters, High Ceilings, Quartz Counters, Sauna, Separate Entrance, Vaulted Ceiling(s), Vinyl Windows

Appliances Dishwasher, Dryer, Microwave Hood Fan, Refrigerator, Stove(s), Washer, Window Coverings

Heating Forced Air, Natural Gas, High Efficiency

Cooling None

Has Basement Yes

Basement Finished, Full

### Exterior

Exterior Features Fire Pit, Private Entrance, Private Yard

Lot Description Back Yard, City Lot, Few Trees, Lawn

Roof Asphalt Shingle

Construction Brick, Wood Frame

Foundation Poured Concrete

### Additional Information

Date Listed May 22nd, 2025

Days on Market 48

Zoning R-CG

### Listing Details

Listing Office RE/MAX House of Real Estate

Data is supplied by Pillar 9â„¢ MLSÂ® System. Pillar 9â„¢ is the owner of the copyright in its MLSÂ® System. Data is deemed reliable but is not guaranteed accurate by Pillar 9â„¢. The trademarks MLSÂ®, Multiple Listing ServiceÂ® and the associated logos are owned by The Canadian Real Estate Association (CREA) and identify the quality of services provided by real estate professionals who are members of CREA. Used under license.