

\$510,000 - 66 Clydesdale Avenue, Cochrane

MLS® #A2231078

\$510,000

3 Bedroom, 3.00 Bathroom, 1,521 sqft
Residential on 0.06 Acres

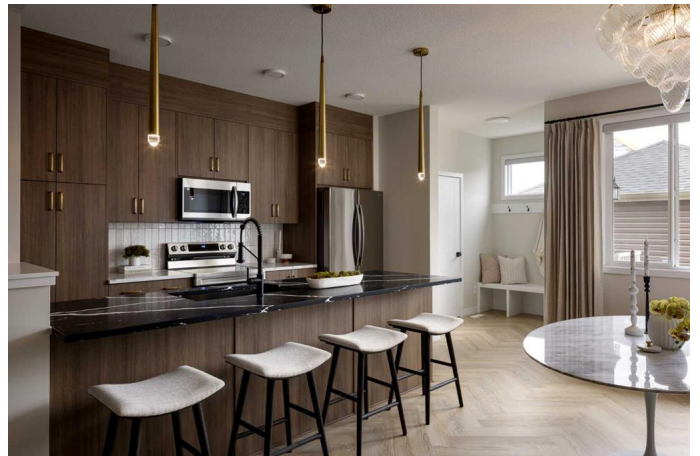
Heartland, Cochrane, Alberta

** Open House at Greystone showhome - 498 River Ave, Cochrane - June 26th 3-5pm, June 27th 2-5pm, June 28th 1-4pm and June 29th 12-3pm ** Welcome to this beautifully designed Talo model townhome by Rohit Homes, located in the vibrant and growing community of Heartland in Cochrane. Thoughtfully crafted with a modern aesthetic and practical layout, this home is ideal for families, first-time buyers, or those looking to right-size without compromise.

Featuring 3 bedrooms, 2.5 bathrooms, and 1,520 sq ft of well-planned living space, this brand-new home offers an open-concept main floor with 9' ceilings and a seamless flow between the kitchen, dining, and living areasâ€”perfect for both everyday living and entertaining.

At the heart of the home is a contemporary kitchen with quartz countertops, a central island, and sleek cabinetry, offering both functionality and style. At the back, a double detached garage provides secure parking and extra storage while maintaining the homeâ€™s clean curb appeal.

Upstairs, the spacious primary suite boasts a private ensuite and ample closet space, while two additional bedrooms offer flexibility for children, guests, or a home office. The upper-level laundry room adds convenience to your daily routine.



Situated in Heartland, Cochrane, this dynamic community offers quick access to parks, schools, scenic pathways, local amenities, and major routesâ€”making it easy to commute to Calgary or escape to the mountains for the weekend.

Donâ€™t miss your opportunity to own a stylish, low-maintenance home in one of Cochraneâ€™s most desirable new communitiesâ€”book your showing today!

Built in 2025

Essential Information

MLS® #	A2231078
Price	\$510,000
Bedrooms	3
Bathrooms	3.00
Full Baths	2
Half Baths	1
Square Footage	1,521
Acres	0.06
Year Built	2025
Type	Residential
Sub-Type	Row/Townhouse
Style	2 Storey
Status	Active

Community Information

Address	66 Clydesdale Avenue
Subdivision	Heartland
City	Cochrane
County	Rocky View County
Province	Alberta
Postal Code	T4C 2Y6

Amenities

Parking Spaces	2
----------------	---

Parking	Double Garage Detached
# of Garages	2

Interior

Interior Features	Built-in Features, Closet O Kitchen Island, No Animal H Walk-In Closet(s)
-------------------	---

Appliances	Dishwasher, Dryer, Microwav
------------	-----------------------------

Heating	Forced Air
---------	------------

Cooling	None
---------	------

Has Basement	Yes
--------------	-----

Basement	Exterior Entry, Full, Unfinishe
----------	---------------------------------

Exterior

Exterior Features	Other
-------------------	-------

Lot Description	Other
-----------------	-------

Roof	Asphalt Shingle
------	-----------------

Construction	Wood Frame
--------------	------------

Foundation	Poured Concrete
------------	-----------------

Additional Information

Date Listed	June 16th, 2025
-------------	-----------------

Days on Market	15
----------------	----

Zoning	TBD
--------	-----

Listing Details

Listing Office	eXp Realty
----------------	------------

Data is supplied by Pillar 9â„¢ MLSÂ® System. Pillar 9â„¢ is the owner of the copyright in its MLSÂ® System. Data is deemed reliable but is not guaranteed accurate by Pillar 9â„¢. The trademarks MLSÂ®, Multiple Listing ServiceÂ® and the associated logos are owned by The Canadian Real Estate Association (CREA) and identify the quality of services provided by real estate professionals who are members of CREA. Used under license.

