

# \$530,000 - 1316 Maitland Drive Ne, Calgary

MLS® #A2231991

## \$530,000

5 Bedroom, 2.00 Bathroom, 959 sqft

Residential on 0.09 Acres

Marlborough Park, Calgary, Alberta

This beautiful, updated bungalow offers a total of 5 bedrooms, with 3 on the main floor and 2 more in the fully finished basement, perfect for large families or guests. Inside, you'll find a bright main floor with a spacious living room, updated kitchen with a quartz countertop, and a full bathroom. All bedroom closets feature brand new, custom built cabinets.

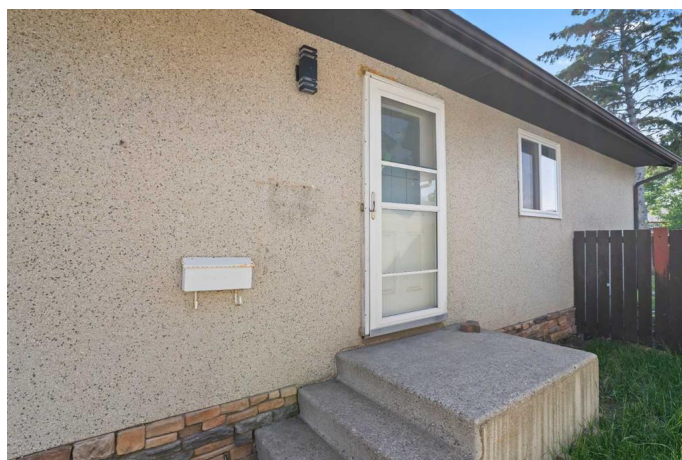
Downstairs, you'll find another full bathroom, a large living area, and a second kitchen, ideal for multi-generational living or other uses. The basement also includes a separate entrance, offering added privacy.

Located in the heart of Marlborough Park, this home is close to schools, parks, and shopping areas.

Built in 1978

## Essential Information

MLS® #	A2231991
Price	\$530,000
Bedrooms	5
Bathrooms	2.00
Full Baths	2
Square Footage	959
Acres	0.09
Year Built	1978
Type	Residential



Sub-Type	Detached
Style	Bungalow
Status	Active

### Community Information

Address	1316 Maitland Drive Ne
Subdivision	Marlborough Park
City	Calgary
County	Calgary
Province	Alberta
Postal Code	T2A 5T8

### Amenities

Parking Spaces	1
Parking	Off Street, Carport

### Interior

Interior Features	Quartz Counters
Appliances	Dryer, Microwave Hood Fan, Refrigerator, Stove(s), Washer
Heating	Forced Air
Cooling	None
Has Basement	Yes
Basement	Finished, Full

### Exterior

Exterior Features	Private Yard
Lot Description	Back Yard
Roof	Shingle
Construction	Wood Frame
Foundation	Poured Concrete

### Additional Information

Date Listed	June 22nd, 2025
Days on Market	24
Zoning	R-CG

### Listing Details

Listing Office	Hope Street Real Estate Corp.
----------------	-------------------------------

Data is supplied by Pillar 9â„¢ MLS® System. Pillar 9â„¢ is the owner of the copyright in its MLS® System. Data is deemed reliable but is not guaranteed accurate by Pillar 9â„¢. The trademarks MLS®, Multiple Listing Service® and

the associated logos are owned by The Canadian Real Estate Association (CREA) and identify the quality of services provided by real estate professionals who are members of CREA. Used under license.