

\$375,000 - 3607 20 Avenue S, Lethbridge

MLS® #A2236123

\$375,000

4 Bedroom, 3.00 Bathroom, 1,252 sqft

Residential on 0.15 Acres

Lakeview, Lethbridge, Alberta

Welcome to this versatile 4-level split home in a fantastic southside location. Featuring 4 bedrooms and 2.5 bathrooms, this property offers plenty of space for a growing family. You'll love the mid-century feel throughout, providing a unique character and the perfect opportunity to add your own personal touch. With lots of room to make it your own and fast possession available, this home is ready when you are!

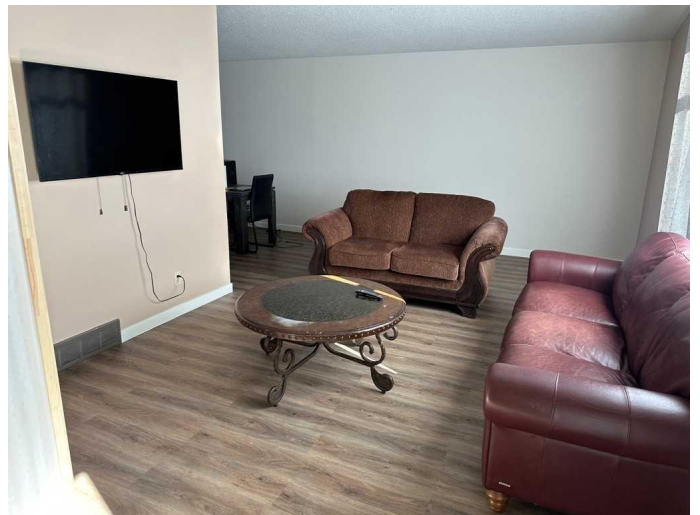
Built in 1976

Essential Information

MLS® #	A2236123
Price	\$375,000
Bedrooms	4
Bathrooms	3.00
Full Baths	2
Half Baths	1
Square Footage	1,252
Acres	0.15
Year Built	1976
Type	Residential
Sub-Type	Detached
Style	4 Level Split
Status	Active

Community Information

Address 3607 20 Avenue S



Subdivision	Lakeview
City	Lethbridge
County	Lethbridge
Province	Alberta
Postal Code	T1K4G5

Amenities

Parking Spaces	2
Parking	Parking Pad

Interior

Interior Features	See Remarks
Appliances	Central Air Conditioner, Dishwasher, Electric Stove, Refrigerator, Washer/Dryer
Heating	Forced Air
Cooling	Central Air
Fireplace	Yes
# of Fireplaces	1
Fireplaces	Gas
Has Basement	Yes
Basement	Finished, Full

Exterior

Exterior Features	Private Yard
Lot Description	Back Yard, Treed
Roof	Membrane
Construction	Wood Frame
Foundation	Poured Concrete

Additional Information

Date Listed	June 30th, 2025
Days on Market	4
Zoning	R-L

Listing Details

Listing Office	Real Estate Centre - Lethbridge
----------------	---------------------------------

Data is supplied by Pillar 9â„¢ MLS® System. Pillar 9â„¢ is the owner of the copyright in its MLS® System. Data is deemed reliable but is not guaranteed accurate by Pillar 9â„¢. The trademarks MLS®, Multiple Listing Service® and the associated logos are owned by The Canadian Real Estate Association (CREA) and identify the quality of services provided by real estate professionals who are members of CREA. Used under license.