

# \$729,000 - 14 Waterford Mews, Chestermere

MLS® #A2236152

**\$729,000**

4 Bedroom, 3.00 Bathroom, 2,080 sqft  
Residential on 0.08 Acres

Waterford, Chestermere, Alberta

Welcome to the brand new community of Waterford! This amazing Semi-Detached Front-Drive Garage Duplex is great at a fantastic price point and includes NEW Blinds! This 4-bedroom, 2.5-bathroom is a 2080 square foot home! The main level features a front porch entrance, a Full bathroom with a shower and a Den on the main floor with a closet, chic kitchen with a pantry, a family room and cozy nook. The Upper floor features a nice size primary bedroom with a walk-in closet and 3 piece ensuite and laundry. The basement is ready for your development and has a Separate entrance! Possession will be December 2025. Call to book your private showing today!

Built in 2025

## Essential Information

MLS® #	A2236152
Price	\$729,000
Bedrooms	4
Bathrooms	3.00
Full Baths	3
Square Footage	2,080
Acres	0.08
Year Built	2025
Type	Residential
Sub-Type	Semi Detached
Style	2 Storey, Side by Side

**35** Prominent  
**WATERFORD, CHESTERMERE**



**MOVE-IN READY!**  
**\$729,000**  
SUMMER/FALL 2025

**ASPEN**

- 4 Bedrooms
- 3 Bathroom
- Full Main Bathroom

**Aspen Duplex**

Welcome to the brand new community of Waterford! This amazing Semi-Detached Front-Drive Garage Duplex is great at a fantastic price point and includes NEW Blinds!

- Chic Kitchen
- Main floor full bath
- Side Entrance
- Large Bonus room
- Front Porch



403-402-3346  
Manjot Mangat

Manjot@prominenthomes.ca  
prominenthomes.ca

Showhome Address:  
241 Waterford Heath



Status	Active
--------	--------

### Community Information

Address	14 Waterford Mews
Subdivision	Waterford
City	Chestermere
County	Chestermere
Province	Alberta
Postal Code	T1X3B4

### Amenities

Parking Spaces	2
Parking	Double Garage Attached
# of Garages	2

### Interior

Interior Features	Double Vanity, Kitchen Island, No Animal Home, No Smoking Home, Open Floorplan, Pantry, Separate Entrance, Walk-In Closet(s)
Appliances	Dishwasher, Electric Range, Microwave Hood Fan, Refrigerator
Heating	Forced Air
Cooling	None
Fireplace	Yes
# of Fireplaces	1
Fireplaces	Electric
Has Basement	Yes
Basement	Exterior Entry, Full, Unfinished

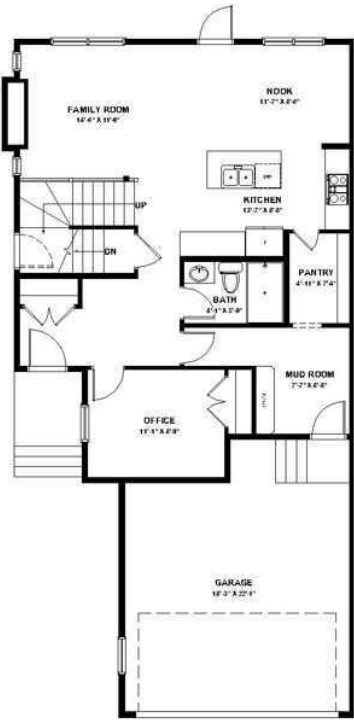
### Exterior

Exterior Features	Lighting
Lot Description	Back Yard, Rectangular Lot
Roof	Asphalt Shingle
Construction	Wood Frame
Foundation	Poured Concrete

### Additional Information

Date Listed	July 4th, 2025
Days on Market	59
Zoning	R-3

### Listing Details



Data is supplied by Pillar 9â„¢ MLSÂ® System. Pillar 9â„¢ is the owner of the copyright in its MLSÂ® System. Data is deemed reliable but is not guaranteed accurate by Pillar 9â„¢. The trademarks MLSÂ®, Multiple Listing ServiceÂ® and the associated logos are owned by The Canadian Real Estate Association (CREA) and identify the quality of services provided by real estate professionals who are members of CREA. Used under license.