

\$469,000 - 143 Glamis Terrace Sw, Calgary

MLS® #A2237779

\$469,000

3 Bedroom, 3.00 Bathroom, 1,438 sqft

Residential on 0.00 Acres

Glamorgan, Calgary, Alberta

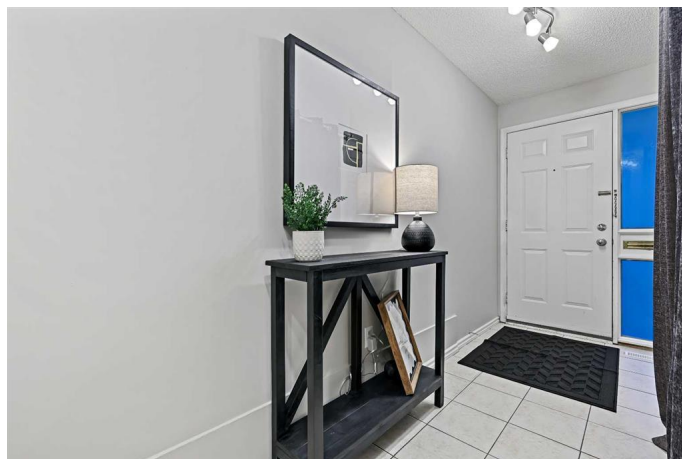
Perfectly positioned in one of the best locations within the complex—backing onto peaceful green space with mature trees—this bright and spacious 3-bedroom townhome, 2.5 baths offers an exceptional layout in the heart of sought-after Glamorgan. The main level features soaring ceilings, a welcoming wood-burning fireplace, and large bay windows that fill the space with natural light. The functional kitchen, separate dining area, and open living room flow seamlessly to a lovely private patio—ideal for relaxing or entertaining while enjoying the serene natural backdrop. Upstairs, you’ll find 3 generously sized bedrooms, including a large primary with its own 3-piece ensuite, secondary 4-piece bath too. All of this and an oversized single attached garage and additional basement storage space provide added convenience. Located close to shopping, schools, parks, and major routes, this well-maintained complex is tucked into one of Calgary’s most established and desirable communities offering comfort, space, and unbeatable value. Be quick or this one will be gone.

Built in 1982

Essential Information

MLS® # A2237779

Price \$469,000



Bedrooms	3
Bathrooms	3.00
Full Baths	2
Half Baths	1
Square Footage	1,438
Acres	0.00
Year Built	1982
Type	Residential
Sub-Type	Row/Townhouse
Style	4 Level Split
Status	Active

Community Information

Address	143 Glamis Terrace Sw
Subdivision	Glamorgan
City	Calgary
County	Calgary
Province	Alberta
Postal Code	T3E 6V3

Amenities

Amenities	Snow Removal
Parking Spaces	2
Parking	Single Garage Attached
# of Garages	1

Interior

Interior Features	High Ceilings, See Remarks
Appliances	Dishwasher, Electric Stove, Microwave, Refrigerator, Window Coverings
Heating	Forced Air
Cooling	None
Fireplace	Yes
# of Fireplaces	1
Fireplaces	Wood Burning
Has Basement	Yes
Basement	Partial, Unfinished

Exterior

Exterior Features	Private Yard
-------------------	--------------

Lot Description	Other
Roof	Asphalt Shingle
Construction	Wood Frame, Wood Siding
Foundation	Poured Concrete

Additional Information

Date Listed	July 16th, 2025
Days on Market	2
Zoning	M-CG d35

Listing Details

Listing Office	RE/MAX First
----------------	--------------

Data is supplied by Pillar 9â„¢ MLS® System. Pillar 9â„¢ is the owner of the copyright in its MLS® System. Data is deemed reliable but is not guaranteed accurate by Pillar 9â„¢. The trademarks MLS®, Multiple Listing Service® and the associated logos are owned by The Canadian Real Estate Association (CREA) and identify the quality of services provided by real estate professionals who are members of CREA. Used under license.