

# \$749,000 - 320 Parkridge Way Se, Calgary

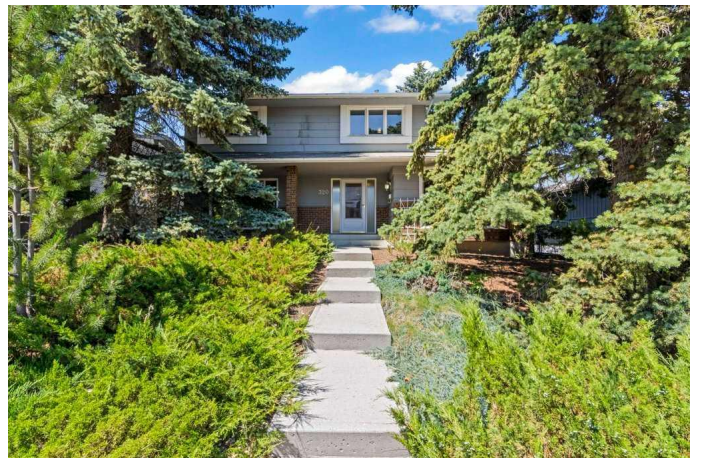
MLS® #A2256008

**\$749,000**

4 Bedroom, 4.00 Bathroom, 1,876 sqft  
Residential on 0.13 Acres

Parkland, Calgary, Alberta

Located on a quiet street in the established and highly desirable neighbourhood of Parkland, this charming Keith "Royal Glen" 2-storey home offers timeless design and incredible functionality for everyday family living. Just steps from the natural beauty of Fish Creek Park, this property blends indoor comfort with outdoor serenity. As you approach the home, you're welcomed by a classic front porch that sets the tone for the warmth and character found inside. Upon entry, a large and bright family room greets you to the right with a large bay window while flowing seamlessly into the formal dining room. This space is anchored by a brick-surround fireplace—perfect for cozy evenings and memorable family dinners. The kitchen, connected directly to the dining area, overlooks the beautifully landscaped backyard, offering a peaceful and functional space for both cooking and entertaining. The main floor also features a versatile den that can be used as a home office, library, or additional family room. A convenient back entrance provides extra storage, helping keep daily life organized and clutter-free. Upstairs, the home offers four spacious bedrooms. The primary suite includes a private 3-piece ensuite, while the other three bedrooms are just steps away from a full 4-piece bathroom, ideal for children, guests, or a growing family. The finished basement adds even more living space with a generous living room, an additional bedroom, a 3-piece bathroom, and plenty of storage



options. Outside, the backyard features low-maintenance landscaping with the oversized double detached garage measuring 26 ft by 21 ft, providing ample space for parking & storage. Parkland is known for its peaceful streets, mature trees, and close-knit community feel. With excellent access to schools, parks, public transit, and major amenities, it remains one of Calgary's most coveted neighborhoods. Residents also enjoy exclusive access to nearby Fish Creek Park—a natural sanctuary offering endless opportunities for hiking, biking, and enjoying nature year-round. This is more than a house—it's a place to build memories. With its spacious layout, thoughtful updates, and unbeatable location, this Keith & Royal Glen home is a rare opportunity in one of Calgary's finest communities. Don't miss your chance to make it yours.

Built in 1976

### Essential Information

|                |             |
|----------------|-------------|
| MLS® #         | A2256008    |
| Price          | \$749,000   |
| Bedrooms       | 4           |
| Bathrooms      | 4.00        |
| Full Baths     | 3           |
| Half Baths     | 1           |
| Square Footage | 1,876       |
| Acres          | 0.13        |
| Year Built     | 1976        |
| Type           | Residential |
| Sub-Type       | Detached    |
| Style          | 2 Storey    |
| Status         | Active      |

### Community Information

|             |                      |
|-------------|----------------------|
| Address     | 320 Parkridge Way Se |
| Subdivision | Parkland             |

|             |         |
|-------------|---------|
| City        | Calgary |
| County      | Calgary |
| Province    | Alberta |
| Postal Code | T2J 4Z6 |

### **Amenities**

|                |  |
|----------------|--|
| Parking Spaces | 2  |
| Parking        | Alley Access, Double Garage Detached, Garage Faces Rear, Oversized |
| # of Garages   | 2  |

### **Interior**

|                   |   |
|-------------------|---|
| Interior Features | Laminate Counters, See Remarks, Storage   |
| Appliances        | Dishwasher, Dryer, Garage Control(s), Gas Stove, Range Hood, Refrigerator, Washer, Window Coverings |
| Heating           | Forced Air  |
| Cooling           | Central Air   |
| Fireplace         | Yes   |
| # of Fireplaces   | 2   |
| Fireplaces        | Basement, Gas, Living Room, Mantle, Wood Burning, Brick Facing                                      |
| Has Basement      | Yes   |
| Basement          | Finished, Full  |

### **Exterior**

|                   |   |
|-------------------|---|
| Exterior Features | Private Yard, Storage                             |
| Lot Description   | Back Lane, Back Yard, Landscaped, Rectangular Lot |
| Roof              | Asphalt Shingle                                   |
| Construction      | Brick, Wood Frame, Wood Siding                    |
| Foundation        | Poured Concrete                                   |

### **Additional Information**

|                |                      |
|----------------|----------------------|
| Date Listed    | September 10th, 2025 |
| Days on Market | 6                    |
| Zoning         | R-CG                 |

### **Listing Details**

|                |                        |
|----------------|------------------------|
| Listing Office | Royal LePage Benchmark |
|----------------|------------------------|

Data is supplied by Pillar 9â„¢ MLSÂ® System. Pillar 9â„¢ is the owner of the copyright in its MLSÂ® System. Data is deemed reliable but is not guaranteed accurate by Pillar 9â„¢. The trademarks MLSÂ®, Multiple Listing ServiceÂ® and the associated logos are owned by The Canadian Real Estate Association (CREA) and identify the quality of services provided by real estate professionals who are members of CREA. Used under license.