

\$465,000 - 1902, 280 Chelsea Road, Chestermere

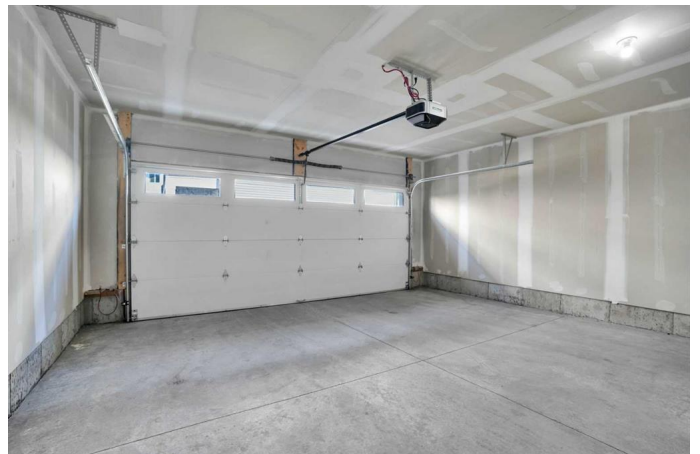
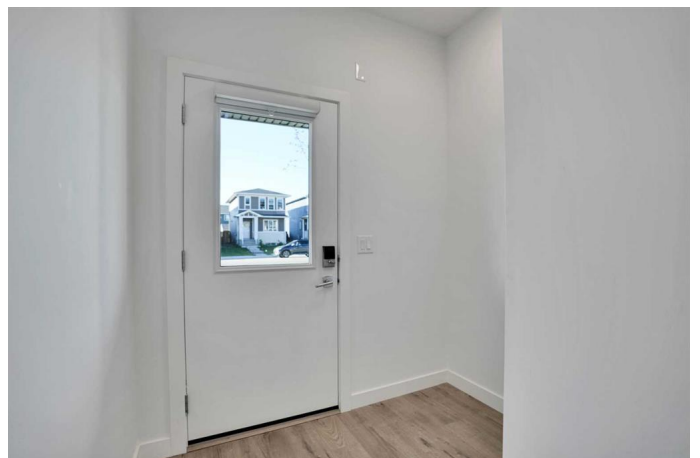
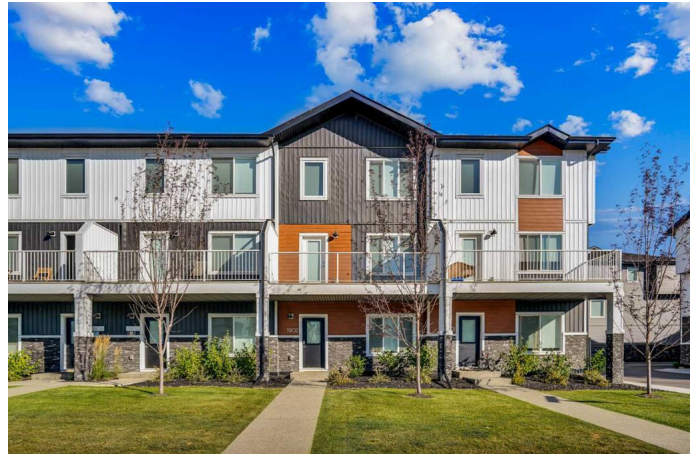
MLS® #A2260466

\$465,000

4 Bedroom, 3.00 Bathroom, 1,703 sqft
Residential on 0.00 Acres

Chelsea_CH, Chestermere, Alberta

Back in Market due to financing. Aberdeen Townhomes by Truman! Experience the charm of this exquisite 4-Bedroom Townhome, nestled in the thriving and vibrant community of Chelsea. This exceptional home offers unparalleled convenience with nearby playgrounds, scenic pathways, and shopping options, all within a welcoming and dynamic neighborhood. Step inside to discover a beautifully designed living space featuring 4 bedrooms, 2.5 bathrooms, and an attached double heated garage. The main floor includes a versatile bedroom that's ideal for guests or a home office. The interior showcases top-tier finishes and craftsmanship, including elegant Vinyl Plank flooring throughout the main living areas and high ceilings. The gourmet kitchen is a chef's delight, featuring Full-Height Cabinetry with soft-close Doors and Drawers, a sleek Stainless Steel Appliance package, and a storage pantry. The Eat-Up Bar, highlighted by stunning Quartz Countertops, offers a stylish spot for casual dining and entertaining. The Primary Bedroom serves as a serene retreat, complete with a spacious walk-in Closet and a luxurious 4-piece Ensuite bathroom. The upper level is thoughtfully designed with two additional Bedrooms, a 4-piece Main Bathroom, and convenient upper-floor Laundry, ensuring comfort and practicality for the entire family. Bright and airy, this move-in-ready home is an invitation to elevate your living experience and embrace the refined Truman lifestyle. Seize



the opportunity to make this exceptional townhome yours today!

Built in 2024

Essential Information

| | |
|----------------|---------------|
| MLS® # | A2260466 |
| Price | \$465,000 |
| Bedrooms | 4 |
| Bathrooms | 3.00 |
| Full Baths | 2 |
| Half Baths | 1 |
| Square Footage | 1,703 |
| Acres | 0.00 |
| Year Built | 2024 |
| Type | Residential |
| Sub-Type | Row/Townhouse |
| Style | 3 Storey |
| Status | Active |

Community Information

| | |
|-------------|------------------------|
| Address | 1902, 280 Chelsea Road |
| Subdivision | Chelsea_CH |
| City | Chestermere |
| County | Chestermere |
| Province | Alberta |
| Postal Code | T1X 2X9 |

Amenities

| | |
|----------------|---------------------------------------|
| Amenities | Park, Visitor Parking |
| Parking Spaces | 2 |
| Parking | Double Garage Attached, Heated Garage |
| # of Garages | 2 |

Interior

| | |
|-------------------|--|
| Interior Features | Kitchen Island, No Animal Home, No Smoking Home, Open Floorplan, Pantry, Quartz Counters, Walk-In Closet(s), See Remarks |
| Appliances | Dishwasher, Electric Range, Garage Control(s), Microwave Hood Fan, Refrigerator, Washer/Dryer, Window Coverings |

| | |
|----------|-------------------------|
| Heating | Forced Air, Natural Gas |
| Cooling | None |
| Basement | None |

Exterior

| | |
|-------------------|---|
| Exterior Features | Balcony, BBQ gas line |
| Lot Description | Back Lane, Front Yard, Landscaped, Level, See Remarks |
| Roof | Asphalt Shingle |
| Construction | Vinyl Siding, Wood Frame |
| Foundation | Poured Concrete |

Additional Information

| | |
|----------------|----------------------|
| Date Listed | September 27th, 2025 |
| Days on Market | 32 |
| Zoning | M-G |

Listing Details

| | |
|----------------|------------------------------------|
| Listing Office | RE/MAX Real Estate (Mountain View) |
|----------------|------------------------------------|

Data is supplied by Pillar 9â„¢ MLSÂ® System. Pillar 9â„¢ is the owner of the copyright in its MLSÂ® System. Data is deemed reliable but is not guaranteed accurate by Pillar 9â„¢. The trademarks MLSÂ®, Multiple Listing ServiceÂ® and the associated logos are owned by The Canadian Real Estate Association (CREA) and identify the quality of services provided by real estate professionals who are members of CREA. Used under license.